



1 Year 1 Day

30 November 2020

Umberto Battista
Chief Technical Officer
u.battista@stamtech.com

WHO WE ARE

Stam is an engineering firm with a technology-first approach to problem solving. Sustained by a transversal set of skills, the company can support their clients through all stages of ambitious projects.

OUR MISSION

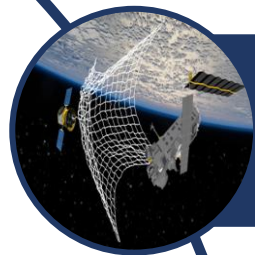
To supply our clients with with unique high-tech solutions, exploiting our technical skills, proprietary assets and our ability in creating financially viable projects through the use of funding bodies.

OUR NUMBERS



22	Years in business	Stam was established in Genoa in 1997
500	Projects Delivered	Stam delivered 500+ projects for industries, enterprises and public bodies
40	Engineers and Technicians	Specialization in mechanical, civil, robotics and energy engineering
35	Average age	Young, ambitious and motivated team
60k	Engineering hrs/year	Specialization in mechanical, civil, robotics and energy engineering
2,6	M€ 2019 Turnover	Constant growth since its foundation
4	Industrial Patents	Our ability to innovate is reflected by the value generated through our IP
4	Offices in Italy	Headquarters in Genoa and offices in Cagliari, Rome and Bari

OUR BUSINESS AND R&D AREAS



Space & Defence



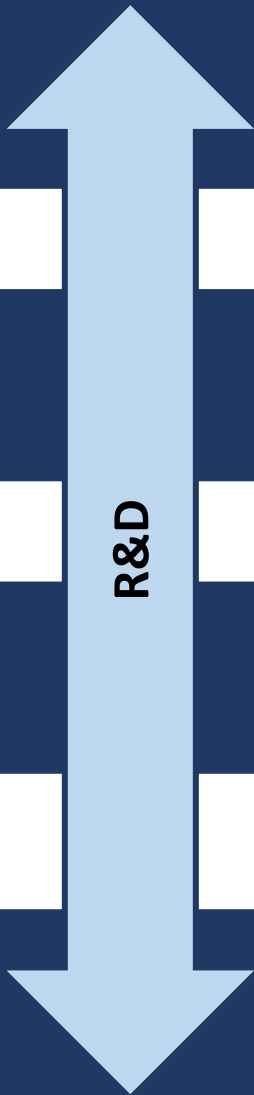
Robotics & Automation



Security & Transport



Energy & Sustainability



OUR KEY CLIENTS AND PARTNERS

Clients



Partners

Industrial



Institutions

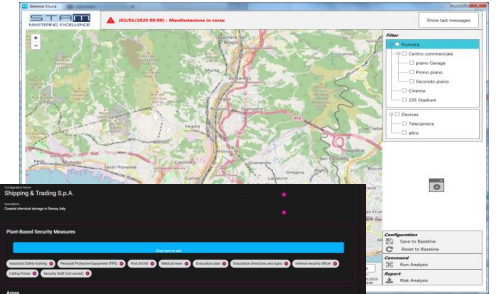


OUR EXPERTISE AND CAPABILITIES



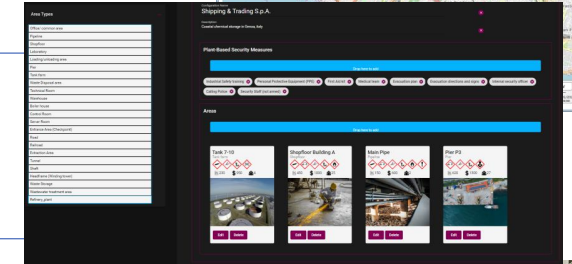
Decision-Support Systems

- Dynamic **risk assessment** of **C/P threats against critical infrastructures** and soft targets
- **Asset management** based on BIM and GIS



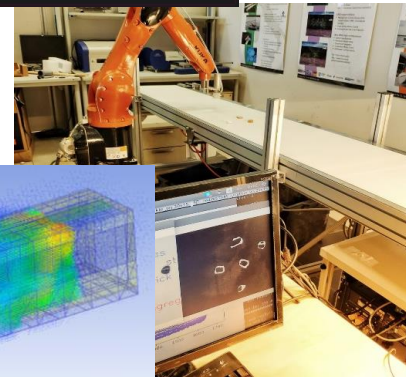
Modelling and Simulation

- **Agent-based** modelling and simulation
- **Explosions** effects on vehicles and structures



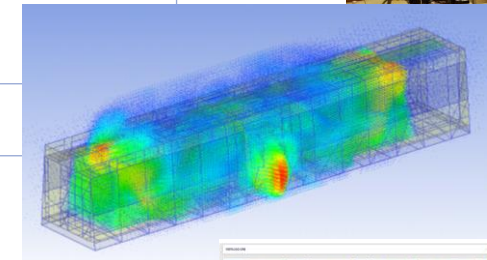
Artificial Intelligence

- **Machine learning** and neural networks
- Data **classification**, regression, **correlation**, optimization, etc.



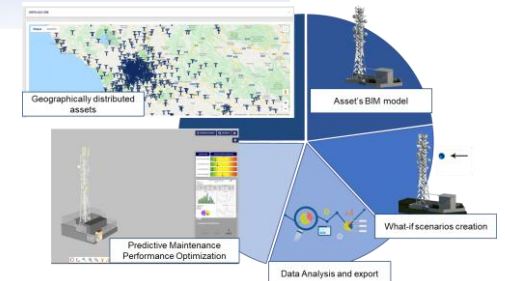
Hyperspectral Imaging

- NIR-LWIR **spectroscopy and algorithms**
- Remote real-time **classification and identification**



Mechatronics

- Advanced **mechatronic devices and robotic solutions**
- **Model-based control systems** and **IoT** solutions



OUR R&D PROJECTS

SECURITY & TRANSPORT

ENERGY & ENVIRONMENT

SPACE & DEFENCE

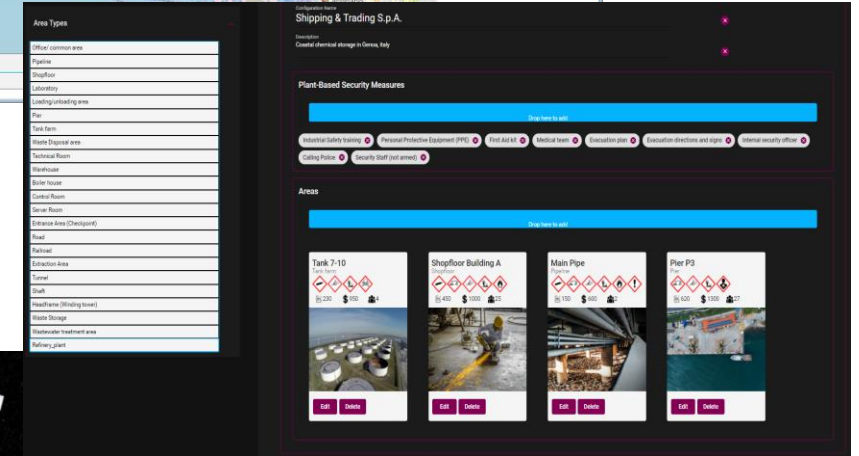
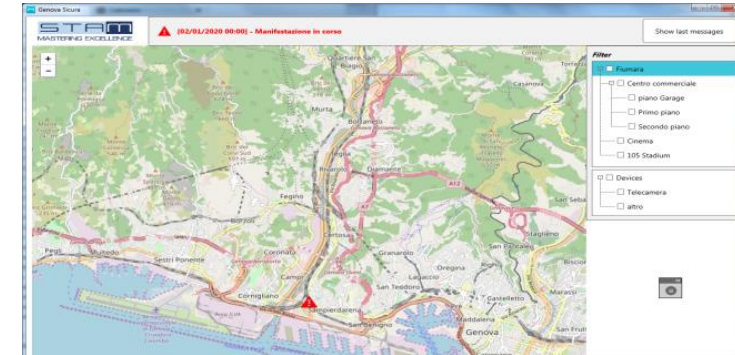
INDUSTRY & AUTOMATION

Logos include: FAIR STATIONS, TERA EYE, IMPRESS, ENTRUST, INFRA STRESS, DAISY, RAMPART, SAFETY4RAIL, SATIE, FIN SEC, EUPROTECT, CitySCAPE, SECUREMETR, KARMA, BRESAER, THERMOSS, Umbrella, ENERGY IN TIME, CETIEB, ADRIN, Innovation Triangle Initiative, RASSS, METAL MORPHOSIS, Lightme, caXman, European Robotics Challenges, technology transfer programme, clean space, European Defence Industrial Development Programme, LEAP FROG, NANO Leap, Cloudi Facturing, SOFT MAN BOT, Alliance, ADRINET, FORTISSIMO, STREAM8, COGNPLANT, share work, LIGHTCOCE.

C/P SECURITY AND SAFETY OF CI AND SOFT TARGETS

Decision-Support Systems:

- Scenario building
- Quantitative risk assessment
- Cost-benefit evaluation of countermeasures
- AI-based data-driven impact assessment
- Combined risk assessment against C/P threats and extreme climate events
- CPR assessment



Applications

- Railways
- Airports
- Chemical plants
- Urban areas
- Maritime surveillance

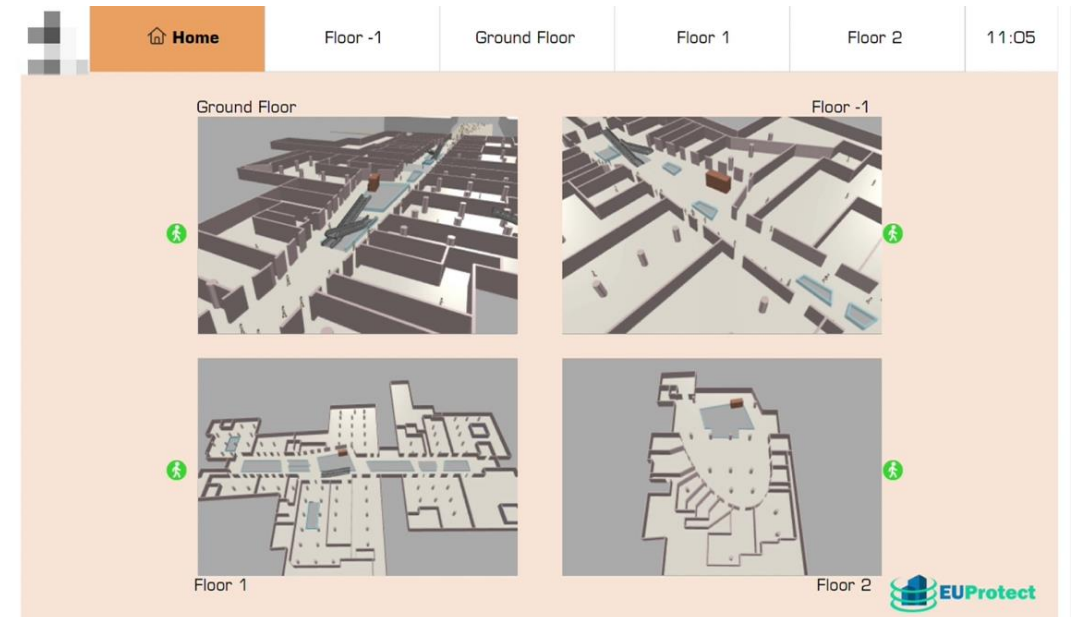


Modelling and simulation:

- Crowd behaviour in operational and attack scenarios, including evacuation
- Interactions with people and assets
- Threat and hazard scenarios for impact assessment
- Identification of weak points
- Improvement of safety and security procedures

Applications

- Railway / metro stations
- Shopping malls
- Public spaces
- Crowded events



Thanks for your attention!

Umberto Battista
u.battista@stamtech.com



www.stamtech.com



stam@stamtech.com



[@Stam_Tech](https://twitter.com/Stam_Tech)



[www.linkedin.com/company/
stam-s-r-l-](http://www.linkedin.com/company/stam-s-r-l-)